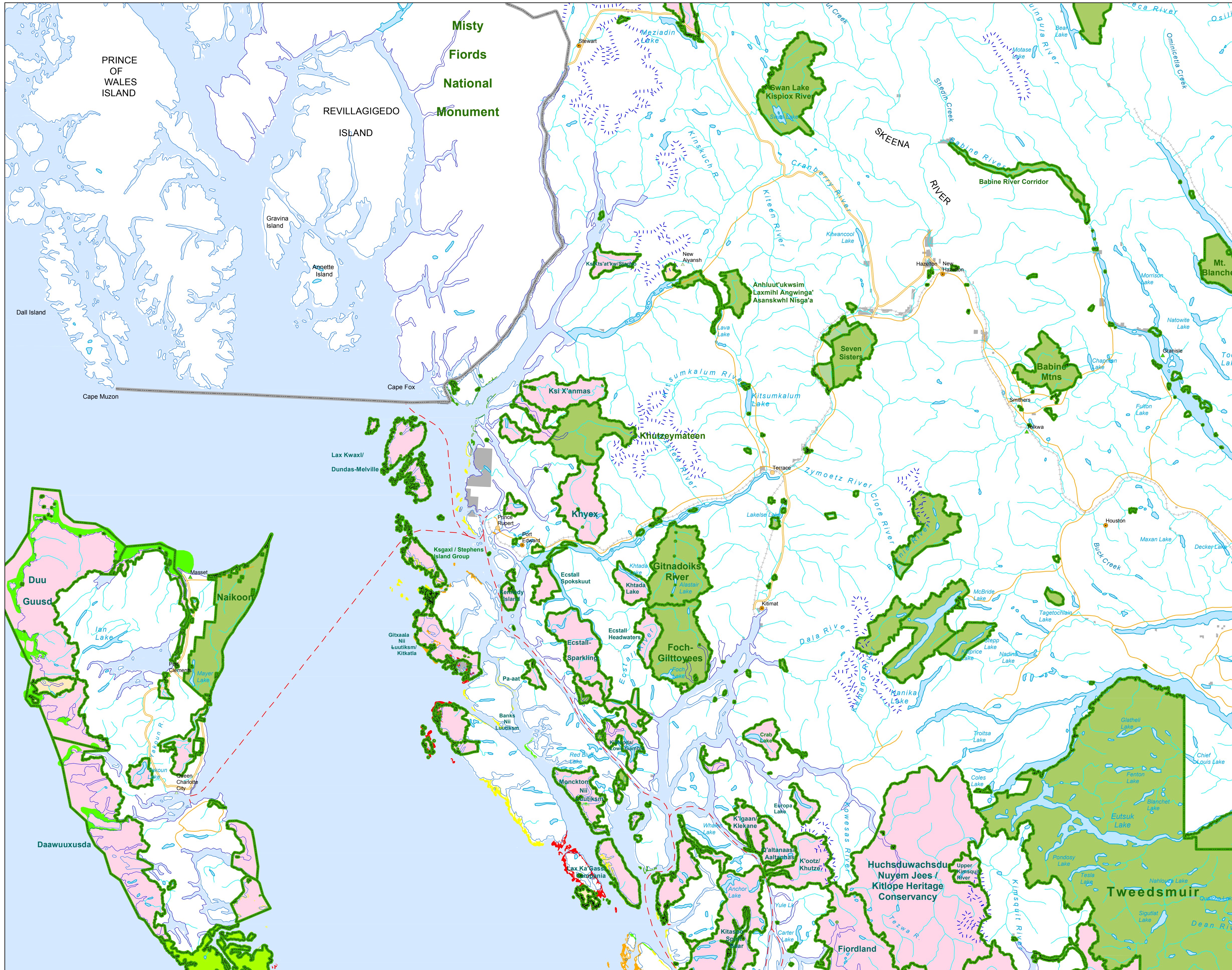


Red and Green Urchins

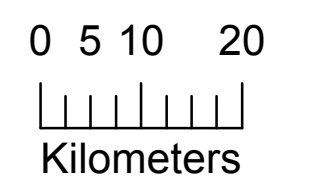


Commercial Fishery Red and Green Urchins

Relative Importance of areas to the Species.

- Area has a Very Low Importance Use to Species
- Area has a Low Importance Use to Species
- Area has a Moderate Importance Use to Species
- Area has a High Importance Use to Species
- Area has a Very High Importance Use to Species

1:750,000



Data Source:

Shoreline Type - Coastal Resource Information Mapping System Shorezone database 2008

Resource Information - Coastal Resource Information Mapping System, 1998-2000, Updates 2004, 2010

Base Information Main Map - GeoBC 1:20,000 TRIM Base

Key Map - GeoBC 1:7,500,000 Base Information

