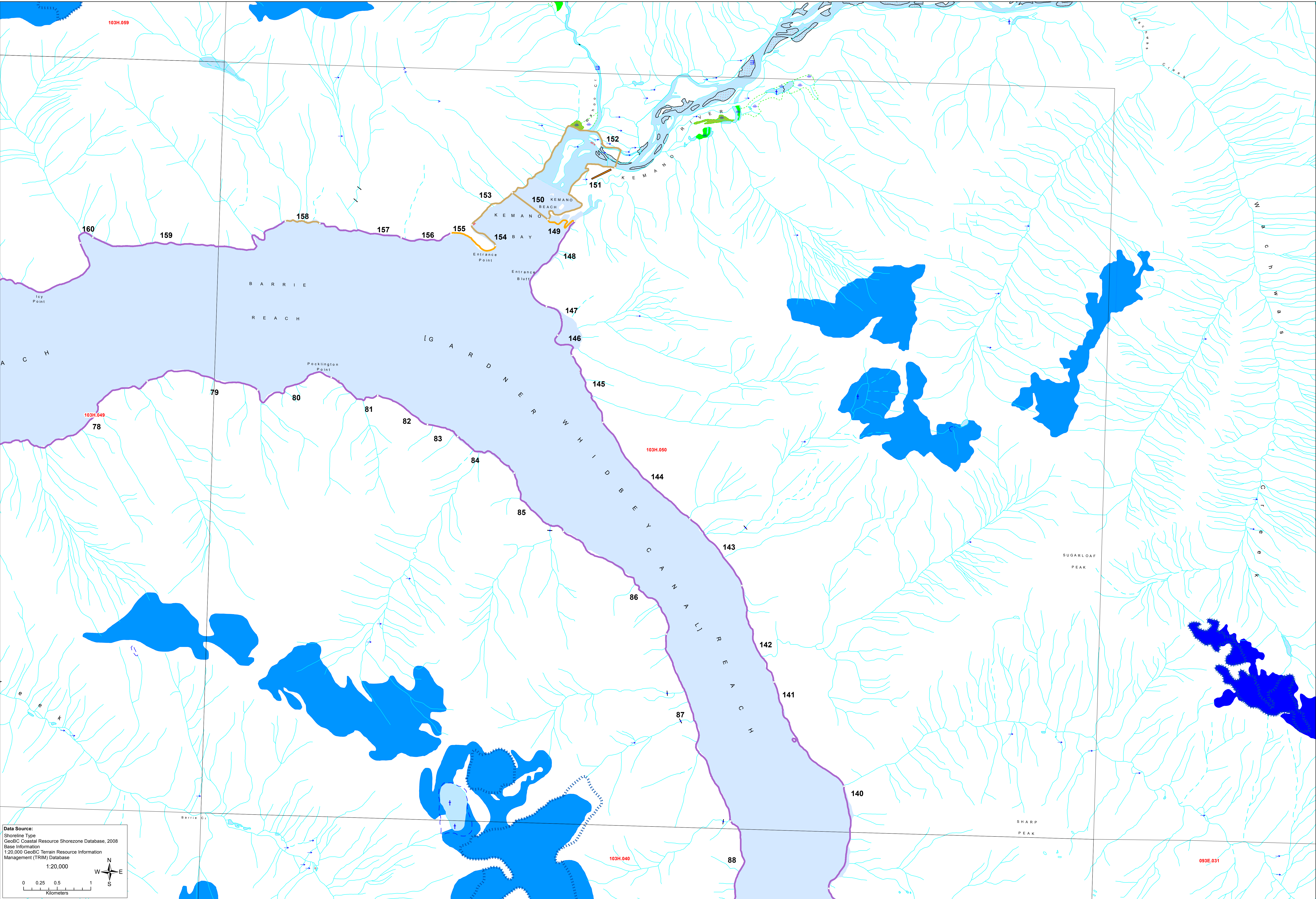


103H.050



## Shoreline Habitat

The Habitat Type provides a simplified picture of the "look" of the unit overall, based on the detailed biophysical attributes that have been mapped. The Habitat Type category is a summary of the observations of both the unit's biological and geomorphological features. Each Habitat Type has a definition that includes the typical substrate, wave exposure and biobands. For example, for the Semi-exposed, Immobile substrate Habitat Type, part of the definition of that class is a certain combination of the most likely biobands and indicator species present at a bedrock shoreline with no mobile sediment present.

How is Habitat Type determined?  
Each Habitat Type has typical biological features (including both an indicator species list and typical associated biobands). To determine the Habitat Type, the biomapper looks at the along-shore Units as designated and described by the physical mapper, and 1. records the observations of the biobands in the unit and looks for indicator species, 2. assigns a bio-(wave) exposure category, 3. reviews the physical mapped information, and 4. assigns the Habitat Type that best describes the unit.

The Habitat Type is based on the whole unit and is similar to the physical mappers use of the 'Coastal Class' category, in that the detailed cross-shore data are summarized into one attribute. The simplified category describes the features of the whole unit.

Habitat Type is a summary of the biophysical classification of the whole shore unit, based on:

- the biobands observed,
- the wave exposure as indicated by the bands, and
- the substrate types in the unit.

Legend Definitions  
CC - Coastal Classification number

Wave Exposure  
E - Exposed - Very high wave exposure, open ocean swells usually fetches >500km  
VE - Very Exposed - Extreme high wave exposure  
SE - Semi Exposed - High wave exposure, open shorelines, areas between fully exposed and more sheltered, usually fetches 50 to 500km  
P - Protected - Low wave exposure, sheltered inlets, usually fetches less than 10km  
SP - Semi Protected - Moderate wave exposure, partly sheltered, usually fetches 10-50km  
VP - Very Protected - Very low wave exposure, fetches < 1km, sheltered anchorages at heads of bays and inlets

Table MIDCOAST and NORTH COAST project area which includes BCO AREAS CC, JS and NC.  
The Species' wave exposure/ substrate table for Habitat Classification (HAB, OBS), for the Mid-coast BC study area, from Johnstone Strait/Central Coast Mapping Regions 5, 6 and 7.

SUBSTRATE STABILITY	IMMOBILE SUBSTRATES					MOBILE OR PARTIALLY MOBILE SUBSTRATES				CURRENT-DOMINATED	TIDAL LAGOON
	BEDROCK	BEDROCK/BOULDER	BEDROCK/GRAVEL	BEDROCK/GRAVEL	SAND & GRAVEL	SAND & GRAVEL	SAND/MUD	SEDIMENT	BEDROCK OR SEDIMENT		
MAJOR COASTAL CLASSES	1-20	1-23, 32, 33	1-23, 33	1-23, 33	24-30, 32	24-30, 31	24-30, 32	24-30	34	35	
EXPOSURE (OBS-REQ)	E	SE	SP	VP, P	no SAL band	VP, P	VP, P, SP	VP, P, SP	VP, P, SP	VP, P, SP	
COMMUNITY CODE (OBS-REQ)	2	3	4	5	6	7	8	9	10	11	
upper	<i>Verrucaria</i>	<i>Verrucaria</i> <i>Enteromorpha</i>	<i>Verrucaria</i> <i>Enteromorpha</i>	<i>Verrucaria</i> <i>Enteromorpha</i>	<i>Verrucaria</i> <i>Enteromorpha</i>	<i>Verrucaria</i> <i>Enteromorpha</i>	<i>grasses &amp; rushes</i> <i>Salicornia</i> <i>virginica</i>				
	<i>Balanus glandula</i>	<i>Balanus glandula</i> <i>Pisum delticus</i>	<i>Balanus glandula</i> <i>Pisum delticus</i>	<i>Balanus glandula</i> <i>Pisum delticus</i>	<i>Balanus glandula</i> <i>Pisum delticus</i>	<i>Balanus glandula</i> <i>Pisum delticus</i>	<i>Balanus glandula</i> <i>Pisum delticus</i>				
middle	<i>Polysiphonia polymera</i> <i>Mytilus californianus</i> <i>Semibalanus cariosus</i>	<i>Mytilus californianus</i> <i>Semibalanus cariosus</i>	<i>Mytilus californianus</i> <i>Semibalanus cariosus</i>	<i>Mytilus californianus</i> <i>Semibalanus cariosus</i>	<i>Mytilus californianus</i> <i>Semibalanus cariosus</i>	<i>Mytilus californianus</i> <i>Semibalanus cariosus</i>	<i>Mytilus californianus</i> <i>Semibalanus cariosus</i>				
mid/low	<i>Alaria 'vamos' morph</i>	<i>Hydrophyllum scutell</i>	<i>Hydrophyllum scutell</i>	<i>Hydrophyllum scutell</i>	<i>Hydrophyllum scutell</i>	<i>Hydrophyllum scutell</i>	<i>Hydrophyllum scutell</i>				
lower	<i>Laminaria digitata</i>	<i>Laminaria digitata</i>	<i>Laminaria digitata</i>	<i>Laminaria digitata</i>	<i>Laminaria digitata</i>	<i>Laminaria digitata</i>	<i>Laminaria digitata</i>				
	<i>Laminaria digitata</i>	<i>Laminaria digitata</i>	<i>Laminaria digitata</i>	<i>Laminaria digitata</i>	<i>Laminaria digitata</i>	<i>Laminaria digitata</i>	<i>Laminaria digitata</i>				
	<i>Laminaria digitata</i>	<i>Laminaria digitata</i>	<i>Laminaria digitata</i>	<i>Laminaria digitata</i>	<i>Laminaria digitata</i>	<i>Laminaria digitata</i>	<i>Laminaria digitata</i>				
subtidal	<i>Nereocystis lachnana</i>	<i>Nereocystis lachnana</i>	<i>Nereocystis lachnana</i>	<i>Nereocystis lachnana</i>	<i>Nereocystis lachnana</i>	<i>Nereocystis lachnana</i>	<i>Nereocystis lachnana</i>				
	<i>Macrocystis integrifolia</i>	<i>Macrocystis integrifolia</i>	<i>Macrocystis integrifolia</i>	<i>Macrocystis integrifolia</i>	<i>Macrocystis integrifolia</i>	<i>Macrocystis integrifolia</i>	<i>Macrocystis integrifolia</i>				
	<i>Strongylocentrotus</i>	<i>Strongylocentrotus</i>	<i>Strongylocentrotus</i>	<i>Strongylocentrotus</i>	<i>Strongylocentrotus</i>	<i>Strongylocentrotus</i>	<i>Strongylocentrotus</i>				
	<i>Fructicans</i>	<i>Fructicans</i>	<i>Fructicans</i>	<i>Fructicans</i>	<i>Fructicans</i>	<i>Fructicans</i>	<i>Fructicans</i>				
	<i>Zostera marina</i>	<i>Zostera marina</i>	<i>Zostera marina</i>	<i>Zostera marina</i>	<i>Zostera marina</i>	<i>Zostera marina</i>	<i>Zostera marina</i>				

