

# MAP 093M034

## ADMINISTRATIVE BOUNDARIES

- |   |   |
|---|---|
|  Municipality or Regional District |  Indian Reserve            |
|  Park or Protected Area            |  First Nations Treaty Land |
|  Private Parcel                    |  Provincial Border         |

## TRANSPORTATION and INFRASTRUCTURE

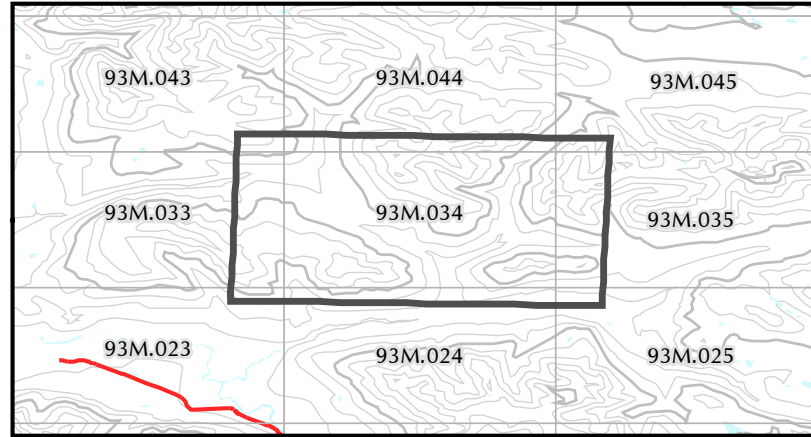
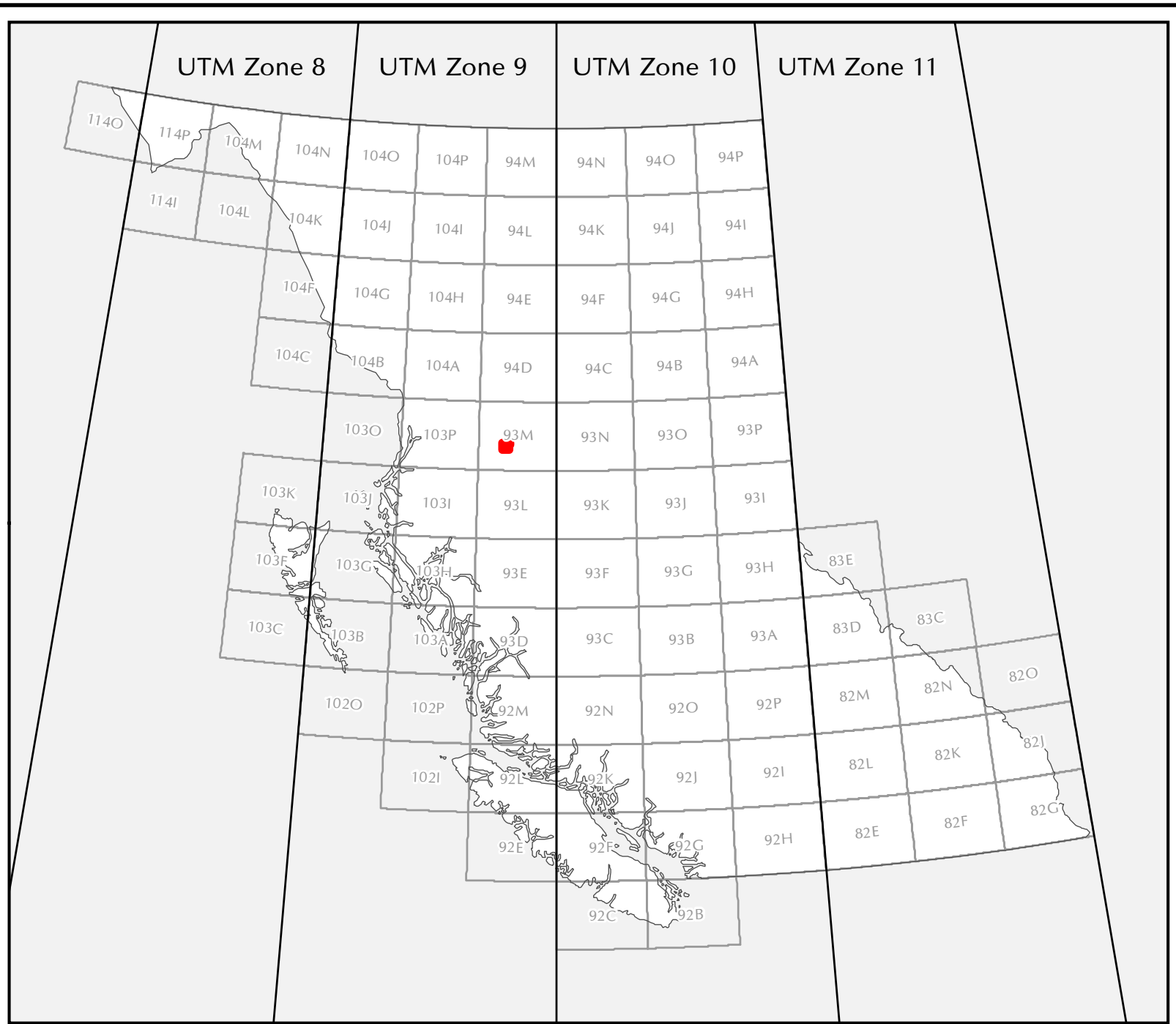
- |  |   |
|--|---|
|  Freeway or Highway |  Transmission Line or Pipeline |
|  Arterial Collector |  Railway Crossing              |
|  Local Road         |  Highway Rest Stop             |
|  Unpaved Road       |  Airport                       |
|  Ferry Route        |  Heliport                      |
|  Railway            |   |
|  Trail              |   |
|  Airfield           |   |

## LAND USE and LAND COVER FEATURES

- |  |  |
|--|--|
|  Ministry of Forests Land and Natural Resource Operations Radio Repeaters |  Building             |
|  BC Recreation Sites (Campgrounds and Picnick Areas)                      |  Police               |
|  Nursery, Orchard, or Vineyard  |  Fire Hall            |
|  Ice Field or Snow Field  |  Ambulance            |
|  Swamp or Marsh   |  Shipyard or Terminal |
|  Wooded Area  |  Port or Harbour      |
|  Built Up Areas   |  |
|  Hospital Properties  |  |

## ELEVATION CONTOURS

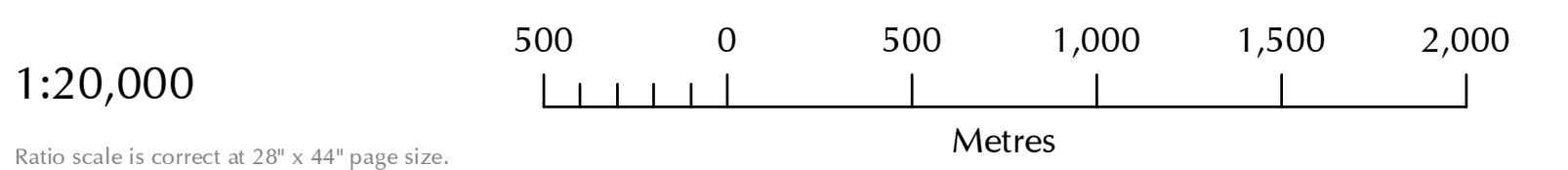
- |  |  |
|--|--|
|  100 Metre Interval |  Contour Depression |
|  20 Metre Interval  |  Spot Height        |



Coordinate System: CCS North  
American 1983 UTM Zone 09U  
(Calculated)  
Projection: Transverse Mercator  
Datum: North American 1983  
False Easting: 500,000,000.00



UTM GRID AND 2016 MAGNETIC NORTH  
DECLINATION AT CENTER OF SHEET



GeoBC

## DATA SOURCE

This map is produced by GeoBC of the Ministry of Forests, Lands, and Natural Resource Operations. It is based on the most current TRIM (Terrain Resource Information Mapping) data available. TRIM data is generally accurate to 10m. This map also contains BC Hydro transmission lines, FLNRO repeater tower locations and various public building locations derived from the Digital Road Atlas. For more information on the data, the TRIM specification or other base mapping products, please visit the GeoBC website at [www.geo.bc.ca](http://www.geo.bc.ca).

## LICENCE and OWNERSHIP

Copyright © 2016, Province of British Columbia. All rights reserved. This material is owned by the Government of British Columbia and protected by copyright law. It may not be reproduced or redistributed without the prior written permission of the Province of British Columbia.

## DISCLAIMER AND WARNING

The Province of British Columbia makes no representations or warranties regarding the accuracy, merchantability, fitness for a particular purpose, or completeness of any information contained in or otherwise comprising this map. Without limiting the foregoing, you are warned not to use this map for navigational purposes. This map may be generalized and may not reflect current conditions. Uncharted hazards may exist.