

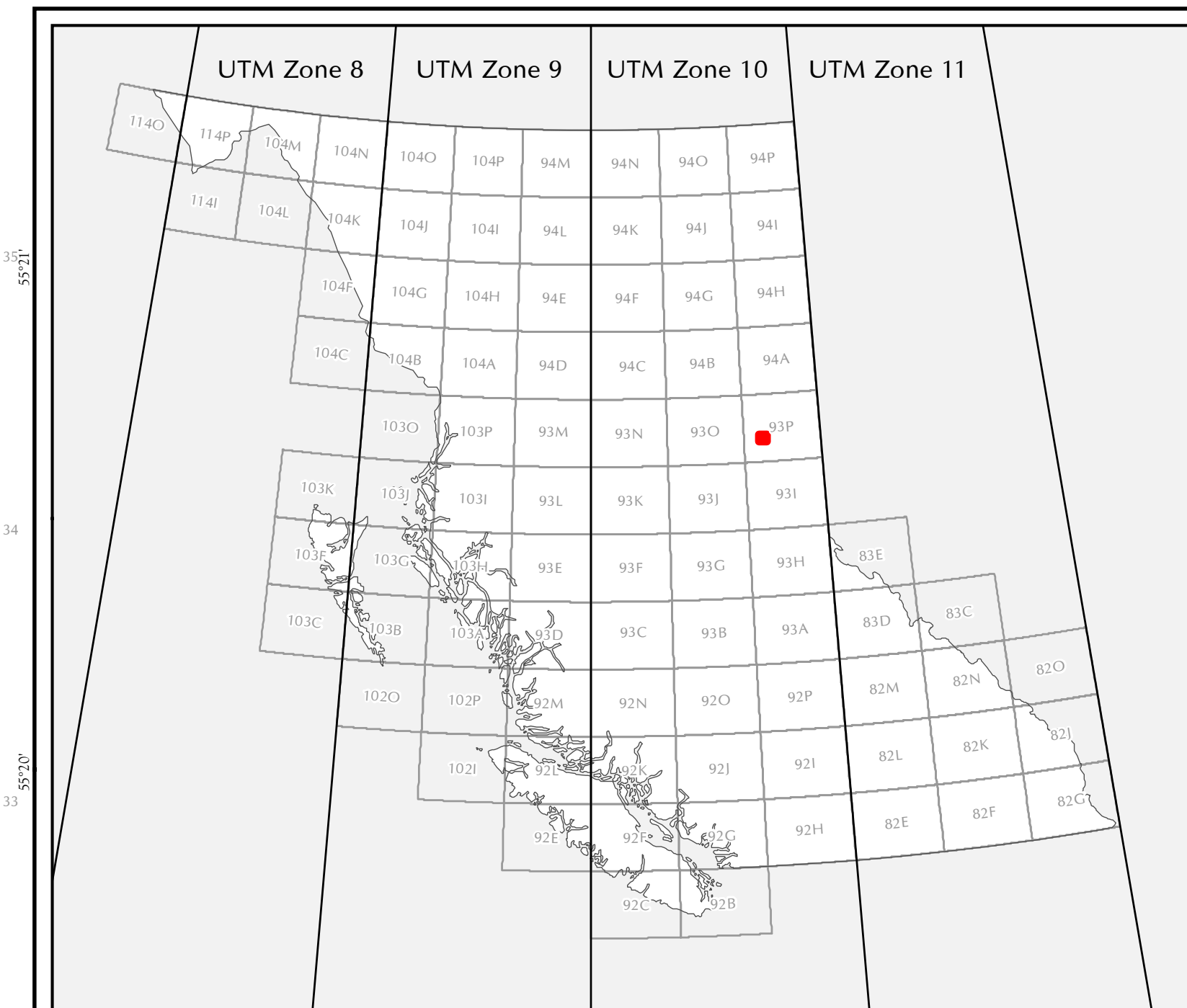
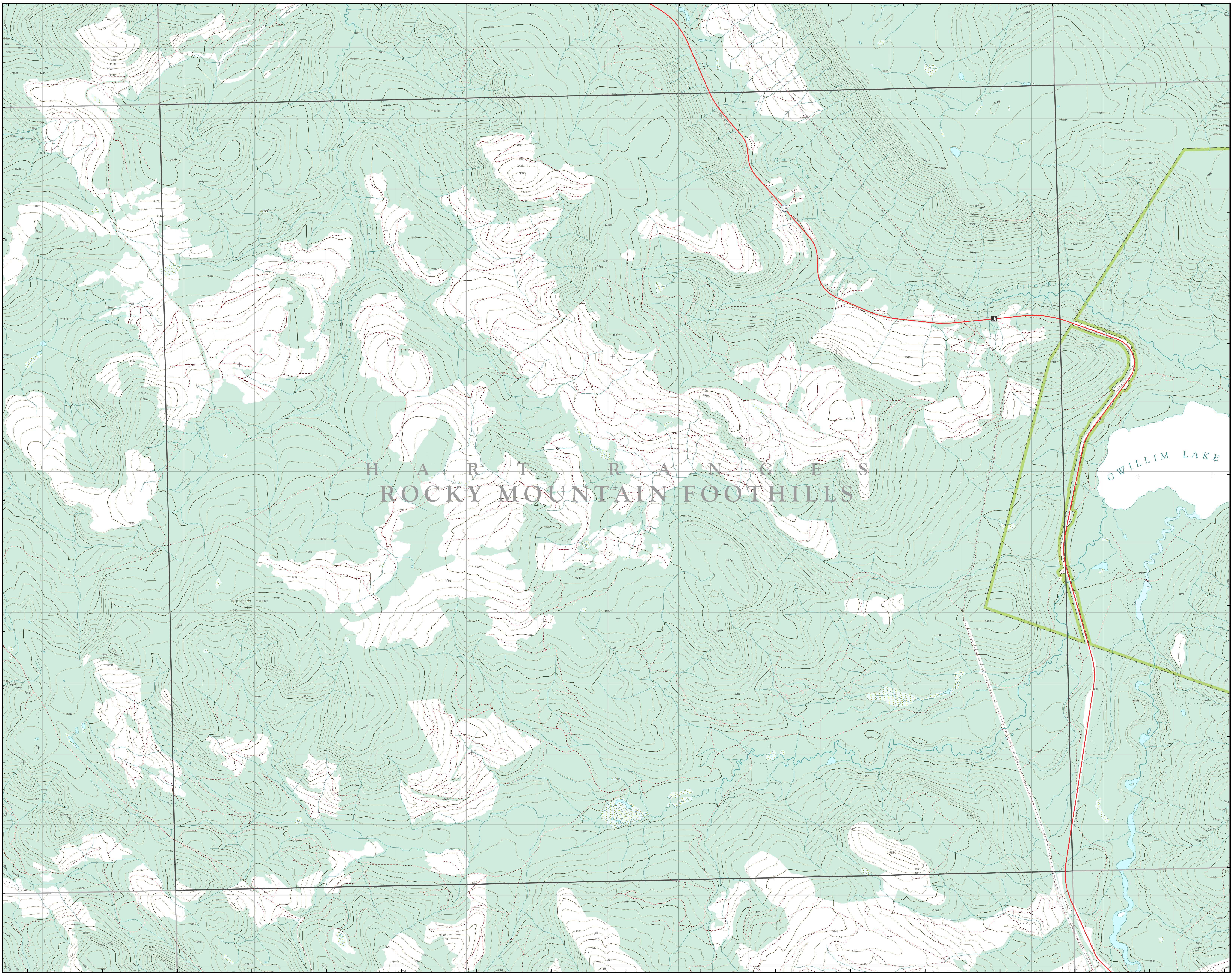
MAP 093P033

- ADMINISTRATIVE BOUNDARIES**
- Municipality or Regional District
 - Park or Protected Area
 - Private Parcel
 - Indian Reserve
 - First Nations Treaty Land
 - Provincial Border

- TRANSPORTATION and INFRASTRUCTURE**
- Freeway or Highway
 - Arterial Collector
 - Local Road
 - Unpaved Road
 - Ferry Route
 - Railway
 - Trail
 - Airfield
 - Transmission Line or Pipeline
 - Railway Crossing
 - Highway Rest Stop
 - Airport
 - Helipoint

- LAND USE and LAND COVER FEATURES**
- Ministry of Forests Land and Natural Resource Operations Radio Repeaters
 - BC Recreation Sites (Campgrounds and Picnick Areas)
 - Nursery, Orchard, or Vineyard
 - Ice Field or Snow Field
 - Swamp or Marsh
 - Wooded Area
 - Built Up Areas
 - Hospital Properties
 - Building
 - Police
 - Fire Hall
 - Ambulance
 - Shipyard or Terminal
 - Port or Harbour

- ELEVATION CONTOURS**
- 100 Metre Interval
 - 20 Metre Interval
 - Contour Depression
 - Spot Height



Coordinate System: **CS North American 1983 UTM Zone 10U**
 (Calculated)
 Projection: **Transverse Mercator**
 Datum: **North American 1983**
 False Easting: **500,000,000**

1:20,000

500 0 500 1,000 1,500 2,000

Metres

Ratio scale is correct at 28" x 44" page size.

BRITISH COLUMBIA | **GeoBC**

DATA SOURCE
 This map is produced by GeoBC of the Ministry of Forests, Lands, and Natural Resource Operations. It is based on the most current TRIM (Terrain Resource Information Mapping) data available. TRIM data is generally accurate to 10m. This map also contains BC Hydro transmission lines, FENRO repeater tower locations and various public building locations derived from the Digital Road Atlas. For more information on the data, the TRIM specification or other base mapping products, please visit the GeoBC website at www.geo.bc.ca.

LICENCE AND OWNERSHIP
 Copyright © 2016, Province of British Columbia. All rights reserved. This material is owned by the Government of British Columbia and protected by copyright law. It may not be reproduced or redistributed without the prior written permission of the Province of British Columbia.

DISCLAIMER AND WARNING
 The Province of British Columbia makes no representations or warranties regarding the accuracy, merchantability, fitness for a particular purpose, or completeness of any information contained in or otherwise comprising this map. Without limiting the foregoing, you are warned not to use this map for navigational purposes. This map may be generalized and may not reflect current conditions. Uncharted hazards may exist.