

# MAP 094D081

## ADMINISTRATIVE BOUNDARIES

- Municipality or Regional District

Park or Protected Area

Private Parcel
- Indian Reserve

First Nations Treaty Land

Provincial Border

## TRANSPORTATION and INFRASTRUCTURE

- Freeway or Highway

Arterial Collector

Local Road

Unpaved Road

Ferry Route

Railway

Trail

Airfield
- Transmission Line or Pipeline

Railway Crossing

Highway Rest Stop

Airport

Heliport

## LAND USE and LAND COVER FEATURES

- Ministry of Forests Land and Natural Resource Operations Radio Repeaters

BC Recreation Sites (Campgrounds and Picnic Areas)

Nursery, Orchard, or Vineyard

Ice Field or Snow Field

Swamp or Marsh

Wooded Area

Built Up Areas

Hospital Properties
- Building

Police

Fire Hall

Ambulance

Shipyard or Terminal

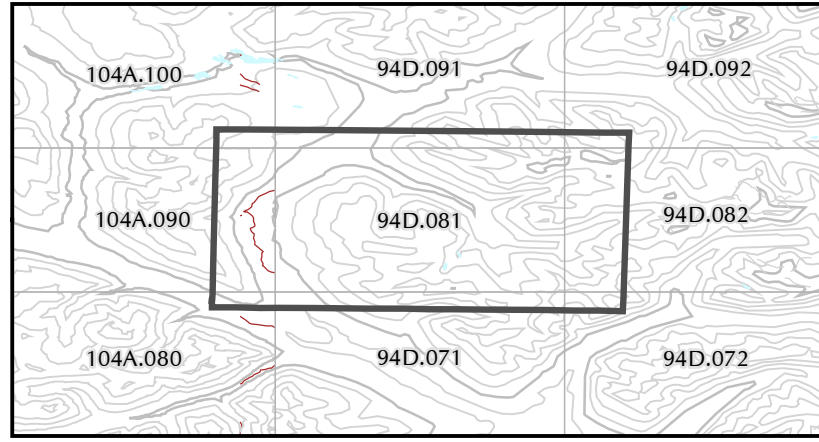
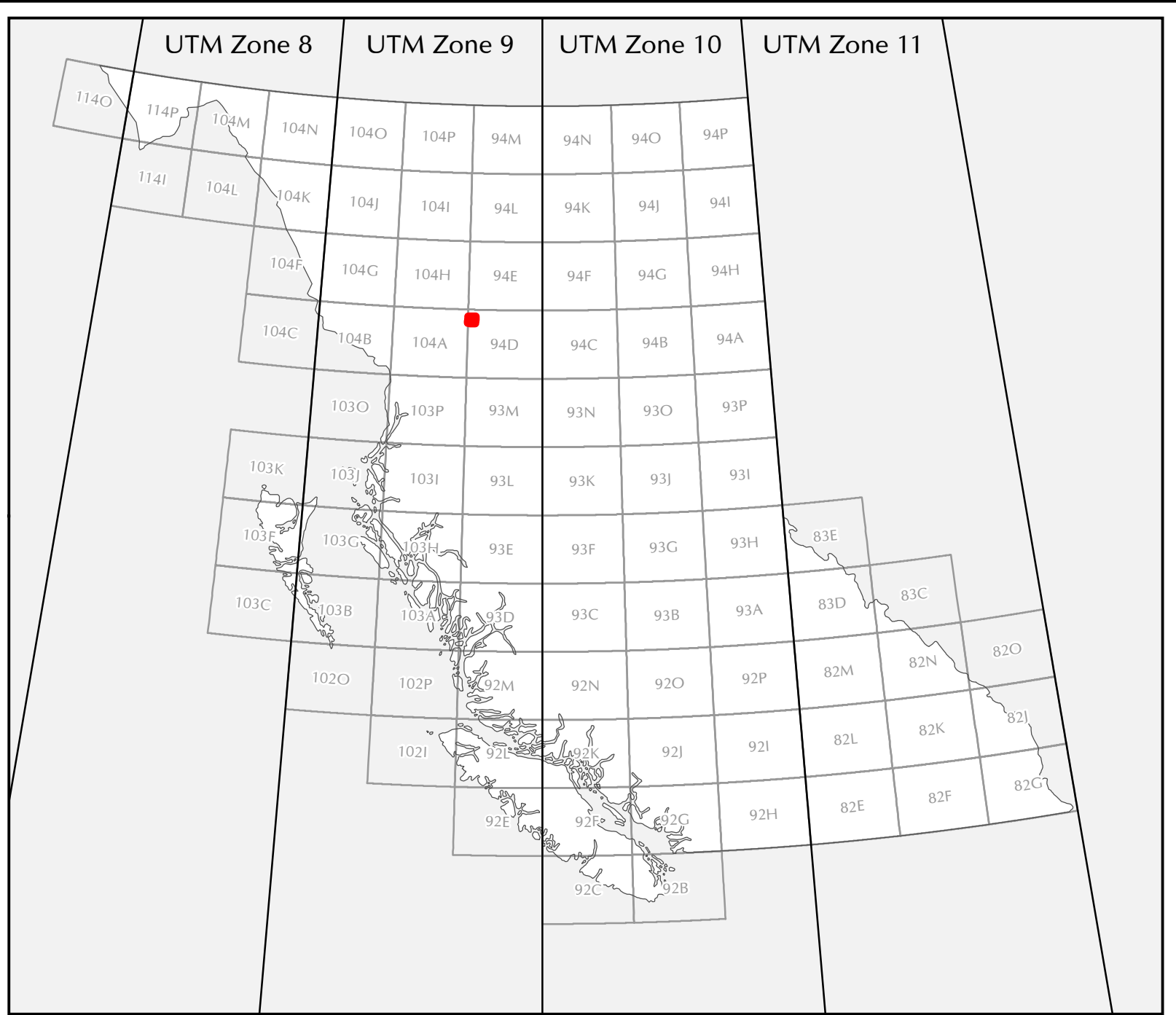
Port or Harbour

## ELEVATION CONTOURS

- 100 Metre Interval

20 Metre Interval
- Contour Depression

Spot Height



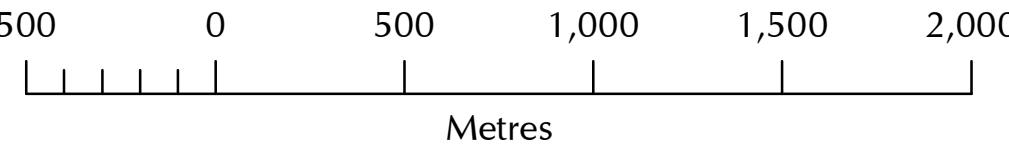
Coordinate System: CCS North  
American 1983 UTM Zone 09V  
(Calculated)  
Projection: Transverse Mercator  
Datum: North American 1983  
False Easting: 500,000,000



UTM GRID AND 2016 MAGNETIC NORTH  
DEVIATION AT CENTER OF SHEET

1:20,000

Ratio scale is correct at 20° x 44° page size.



GeoBC

## DATA SOURCE

This map is produced by GeoBC of the Ministry of Forests, Lands, and Natural Resource Operations. It is based on the most current TRIM (Terrain Resource Information Mapping) data available. TRIM data is generally accurate to 10m. This map also contains BC Hydro transmission lines, FLNRO repeater tower locations and various public building locations derived from the Digital Road Atlas. For more information on the data, the TRIM specification or other base mapping products, please visit the GeoBC website at [www.geobc.gov.bc.ca](http://www.geobc.gov.bc.ca).

## LICENCE AND OWNERSHIP

The Province of British Columbia. All rights reserved. This material is owned by the Government of British Columbia and protected by copyright law. It may not be reproduced or redistributed without the prior written permission of the Province of British Columbia.

## DISCLAIMER AND WARNING

The Province of British Columbia makes no representations or warranties regarding the accuracy, merchantability, fitness for a particular purpose, or completeness of any information contained in or otherwise comprising this map. Without limiting the foregoing, you are warned not to use this map for navigational purposes. This map may be generalized and may not reflect current conditions. Uncharted hazards may exist.