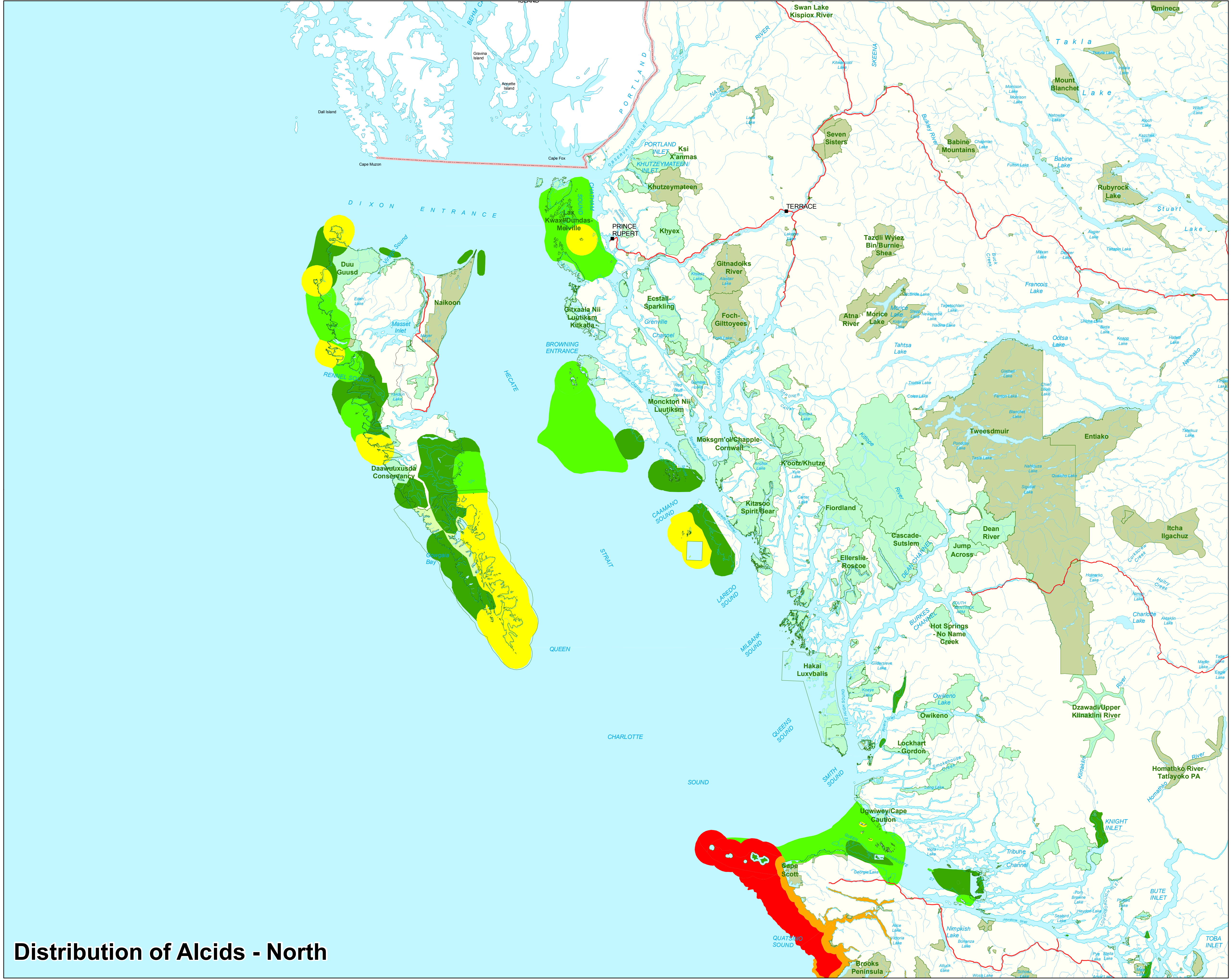


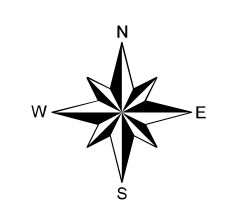
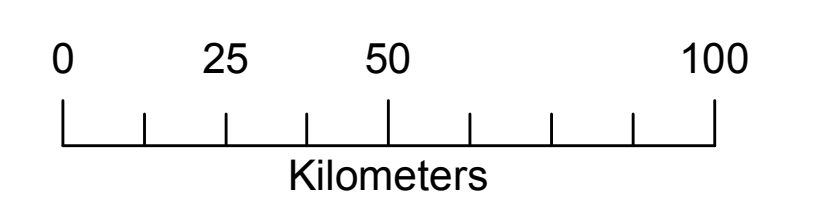
**Legend**

**Relative Importance of areas to the Species.**

- Area has a Very Low Importance Use to Species
- Area has a Low Importance Use to Species
- Area has a Moderate Importance Use to Species
- Area has a High Importance Use to Species
- Area has a Very High Importance Use to Species



1:1,159,208



**Data Source:**

Shoreline Type - ILMB Coastal Resource Information Mapping System Shorezone database 2008

Base Information Main Map - ILMB 1:20,000 TRIM Base

Key Map - ILMB 1:7,500,000 Base Information



**Distribution of Alcids - North**