

**Legend**

- Relative Importance of areas to the Species.**
- Area has a Very Low Importance Use to Species
  - Area has a Low Importance Use to Species
  - Area has a Moderate Importance Use to Species
  - Area has a High Importance Use to Species
  - Area has a Very High Importance Use to Species

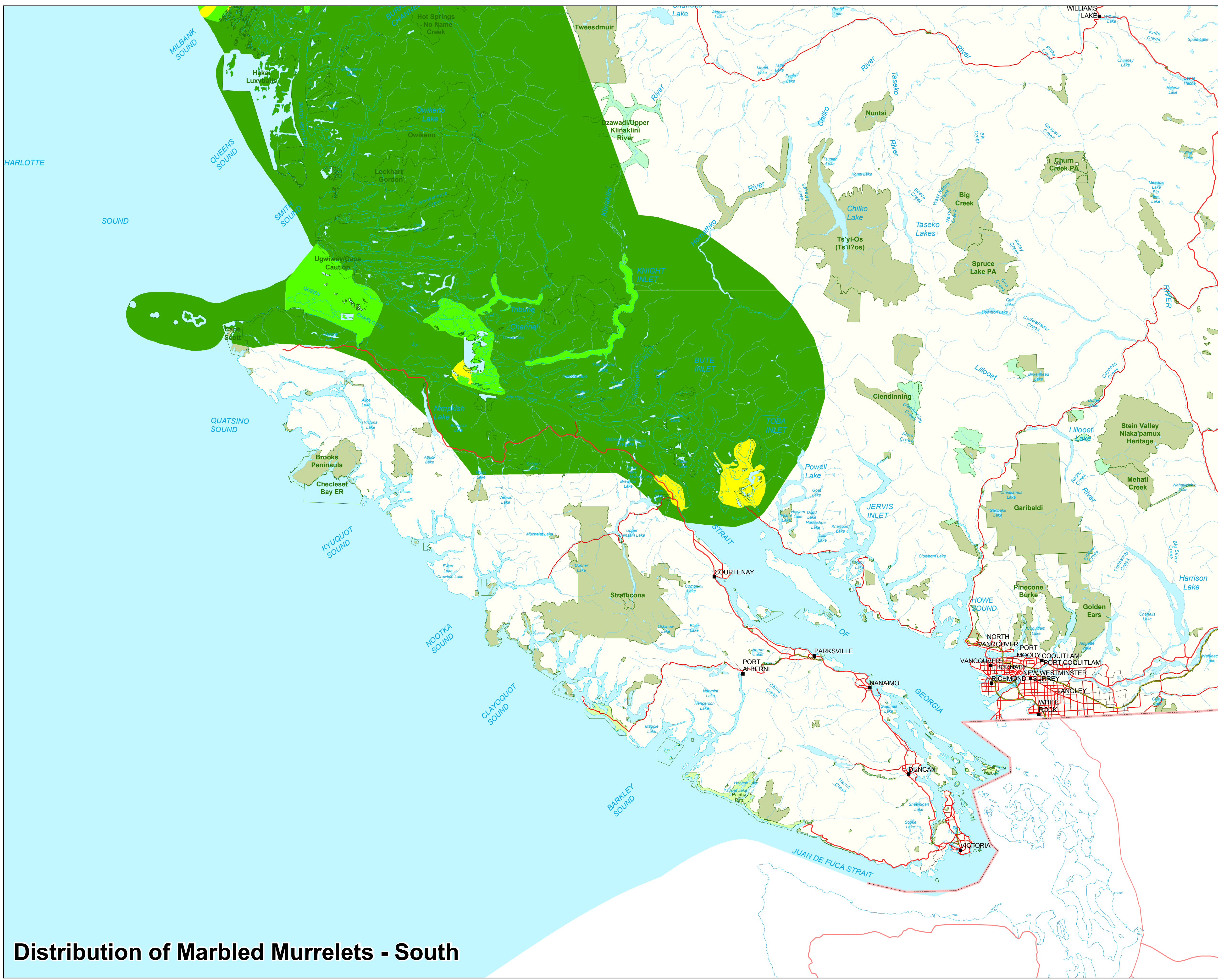
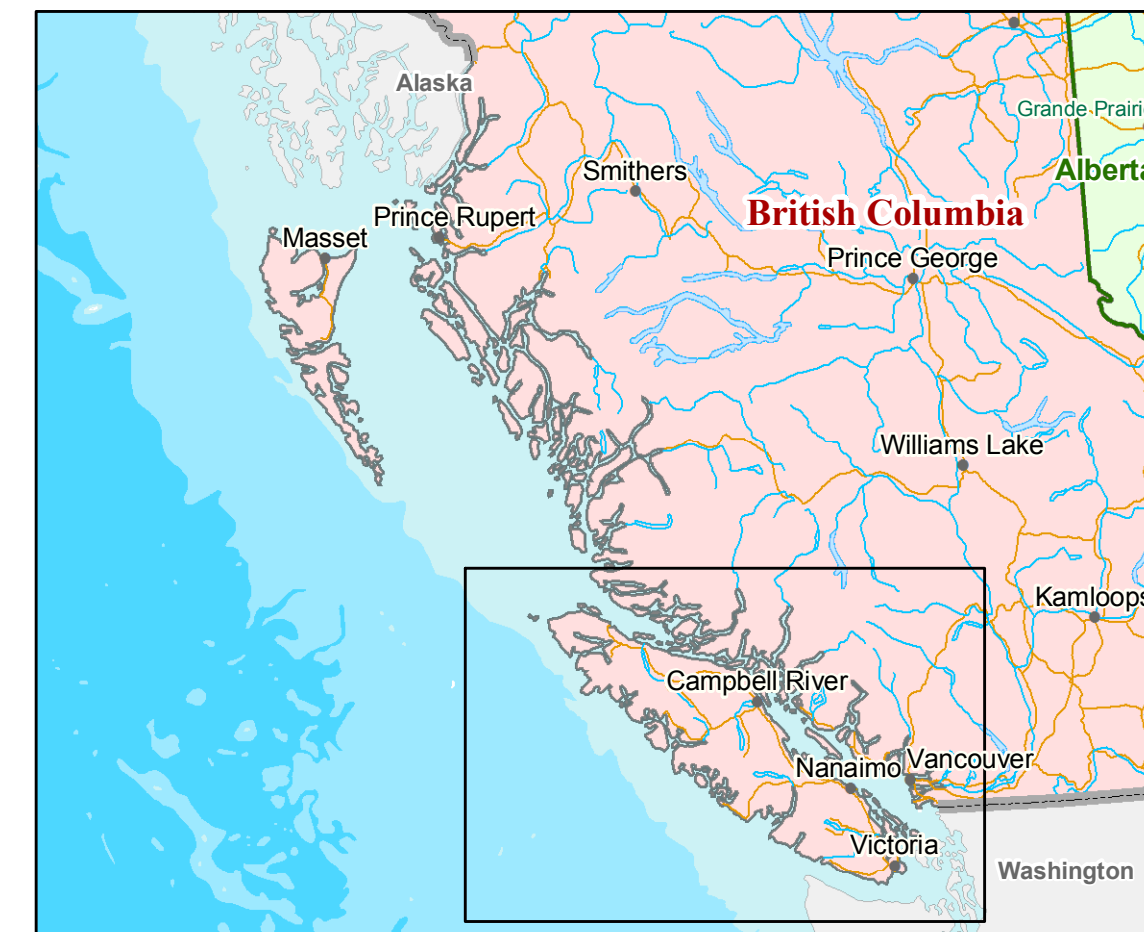
1:900,000

0 25 50 100  
Kilometers

**Data Source:**  
Shoreline Type - ILMB Coastal Resource Information Mapping System Shorezone database 2008

Base Information Main Map - ILMB 1:20,000 TRIM Base

Key Map - ILMB 1:7,500,000 Base Information



**Distribution of Marbled Murrelets - South**