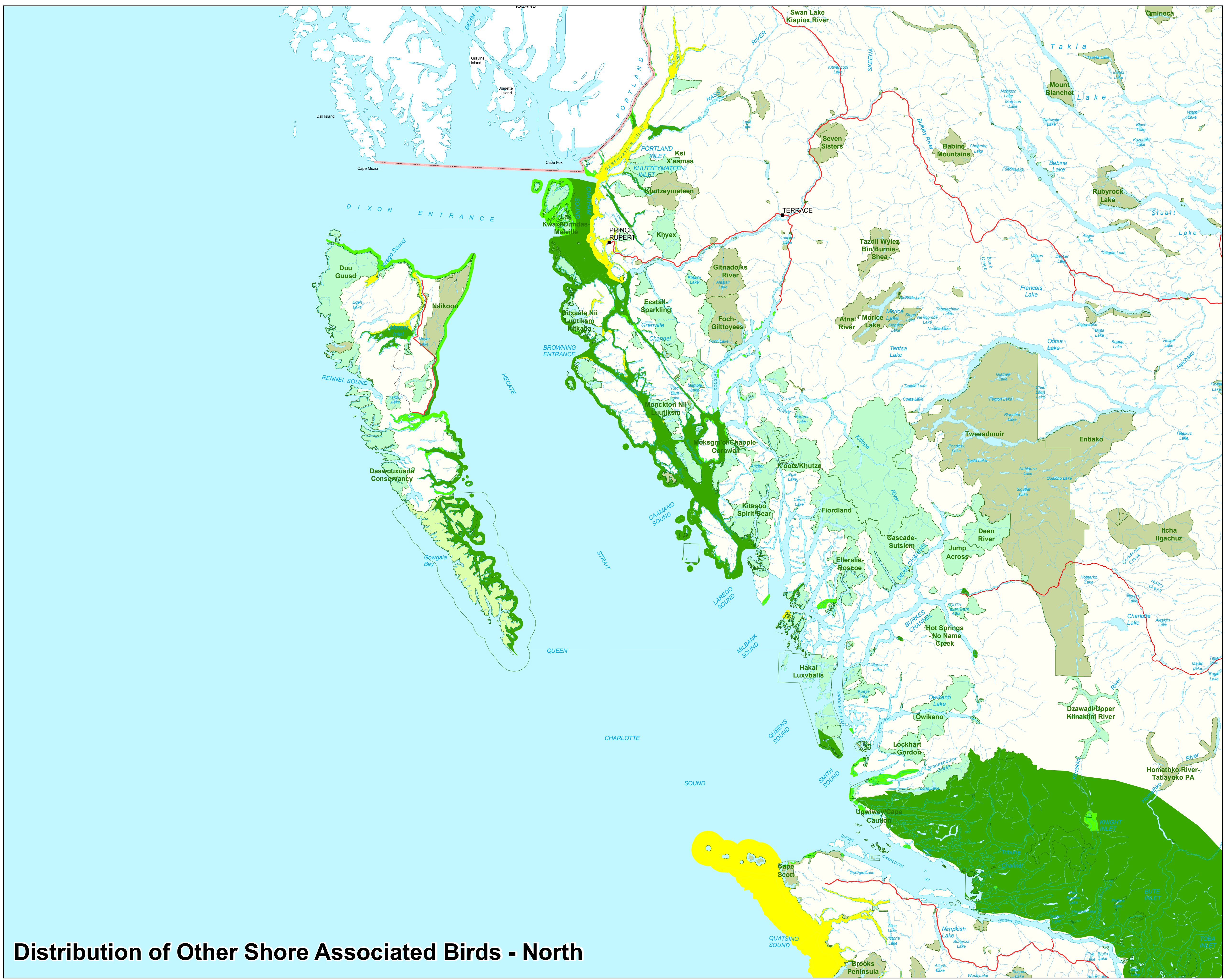
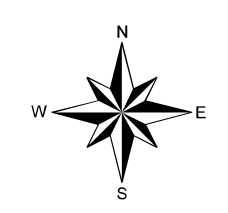
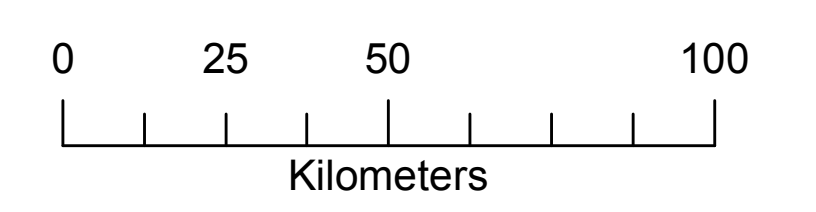


Legend

- Relative Importance of areas to the Species.**
- Area has a Very Low Importance Use to Species
 - Area has a Low Importance Use to Species
 - Area has a Moderate Importance Use to Species
 - Area has a High Importance Use to Species
 - Area has a Very High Importance Use to Species



1:1,159,208



Data Source:
Shoreline Type - ILMB Coastal Resource Information Mapping System Shorezone database 2008

Base Information Main Map - ILMB 1:20,000 TRIM Base

Key Map - ILMB 1:7,500,000 Base Information



Distribution of Other Shore Associated Birds - North